



BENEFIT HUMAN BEINGS WITH NEW ENERGY TECHNOLOGY

Power World Machinery Equipment Co., Ltd.

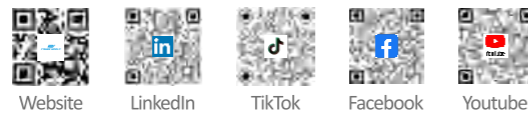
Factory Add.: No.32, Luxi 2nd Road, Liaobu Town, Dongguan, Guangdong, China.

Huizhou Factory: No. 1, Zhenxing South 1st Road, Zhihuigu Industrial Park, Shiwang Town, Boluo County, Guangdong Province,China

E-mail: info@powerworldhp.com

After-sales: technical@powerworld-e.com

Website: www.powerworldhp.com



All rights reserved. Specifications and information subject to change without notice.

The products described in this document are subject to continuous development and improvement.

All trademarks and service marks referred to herein, whether registered or not in specific countries, are the property of their respective owners.



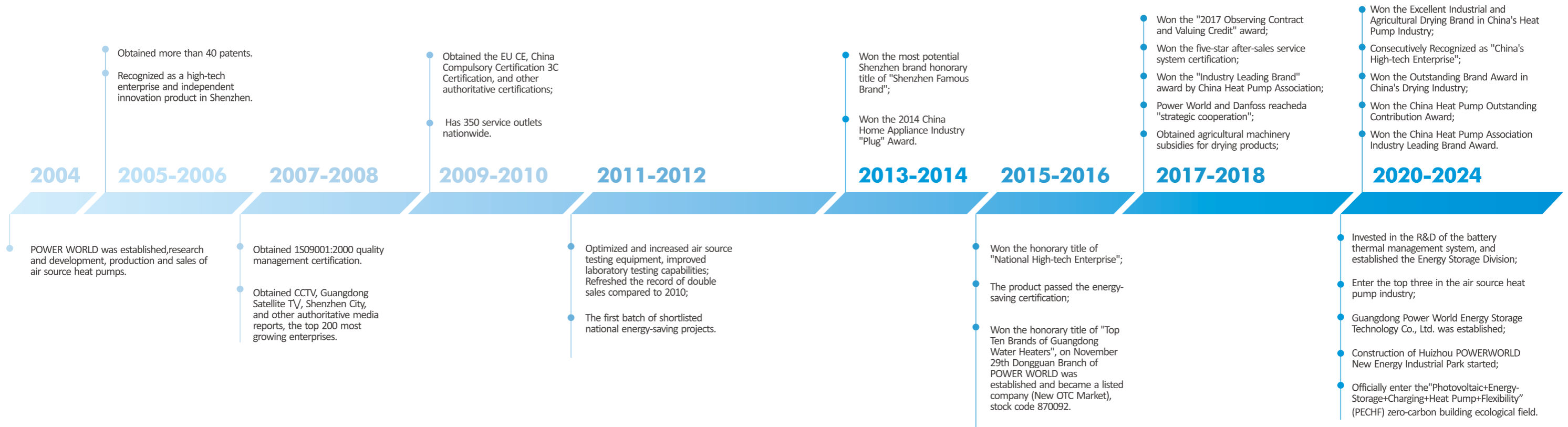
ALL-IN-ONE HOT WATER HEATER



Subsidy-Eligible Heat Pump Solutions



Development History



Smart Home Water Heating

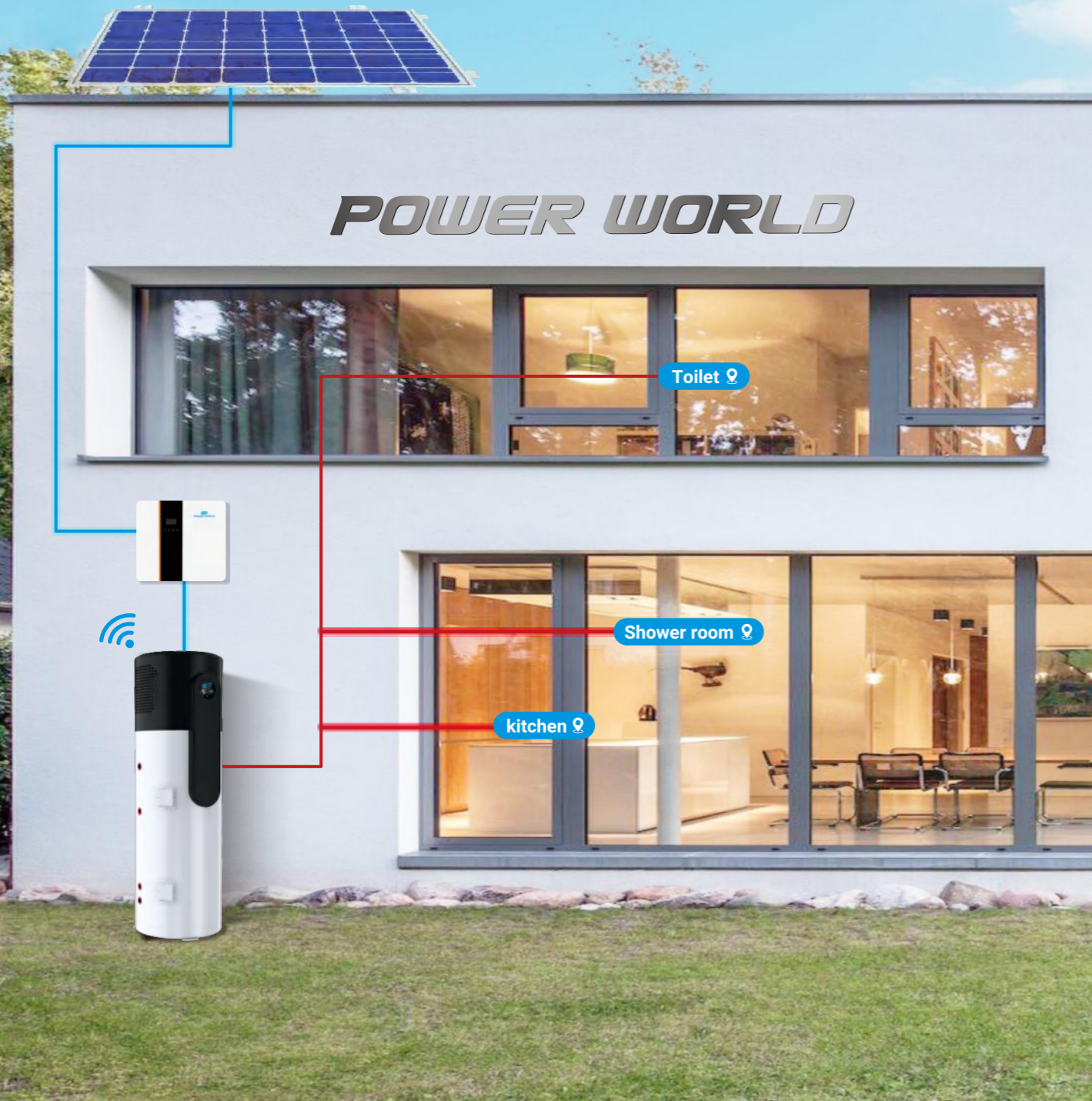
R290 All-in-one heat pump water heater seamlessly integrates with solar PV and smart home controls.



SG-Ready



PV-Ready



R290 All-in-One Hot Water Heater (Full DC Inverter)

It perfectly integrates the heat pump and water storage tank into one outdoor unit, fast producing hot water and save 80% energy costs for users.

200L 300L TANK VOLUME	4/5/6 PEOPLE	HIGH SUBSIDIES	SG-READY	PV-READY
R290 REFRIGERANT	≥ 34 ≥ 34 STCs(Z4~Z5)	4.92 4.92 MAX COP	75°C 75°C MAX TEMP	80% 80% ENERGY SAVINGS
DC INVERTER	INTELLIGENT TEMP CONTROL	ZERO COLD WATER	INTELLIGENT DEFROST	REAL-TIME MONITORING & MANAG



-7°C~43°C
Wide Working Ambient Temperature



Outstanding Performance R290 All-in-One Water Heater

All-in-one units combine the functionalities of a water heater and a heat pump, eliminating the need for separate equipment and saving valuable space in your home.

R290 DC Inverter Heat Pump System

1. Multi-level noise reduction technology
2. Multiple insulation design
3. Anti-freezing design for water tank
4. Comprehensive protection features
5. Dual water tank temperature sensing probe design



FEATURES

- ✓ Specifically designed for outdoor installation.
- ✓ R290 is a new high-efficiency natural refrigerant with low Global Warming Potential(GWP)=3, ODP=0.
- ✓ High-efficiency DC inverter technology saves 30% energy than ON/OFF units.
- ✓ Zero-cold water control, compatible with AC/DC Pumps, provides instant hot water on demand, maximizing energy efficiency.
- ✓ Power/Standard/Silent Mode, 3 operating modes to meet different heating needs.
- ✓ Dual heating technology with incorporated electric element to provide hot water up to 75°C.
- ✓ Built-in Wi-Fi module, no additional Wi-Fi box needed, control with smart App anytime anywhere.
- ✓ Fully intelligent protection system provides effective safety protection for the unit.
- ✓ Equipped with premium configuration, ensuring top-notch performance and unparalleled convenience.
- ✓ Equipped with IoT cloud management platform, data visualization, and the mainboard can be upgraded remotely.
- ✓ Eligible for solar and heat pump water heater rebates schemes such as STC & NSW ESS.
- ✓ Equipped with SG-Ready and PV-Ready ports, compatible with smart grid and photovoltaic systems, maximizing energy bill reduction.



01 Flat Windowed Fins Heat Exchanger

1. Increased heat transfer area and higher efficiency compared to regular fins, resulting in approximately 5%~15% energy efficiency improvement.
2. The golden anti-corrosion hydrophilic coating enhances the equipment's resistance to salt spray and oxidation effectively.



02 HIGHLY brand R290 DC Inverter Compressor

High-efficiency DC inverter technology **saves 30%** energy than ON/OFF units.



Equipped with a 2.8KW high-efficiency **aluminum microchannel** heat exchanger, corrosion-resistant, oxidation-resistant, with **30%** higher heat transfer efficiency than traditional heat exchangers.



Highly insulated water tank with a white enamel-coated inner tank, optional built-in 2KW electric heater.



IPX4, specifically designed for outdoor installation.



Welling Brand DC inverter motor, large air volume, low noise, and small vibration.

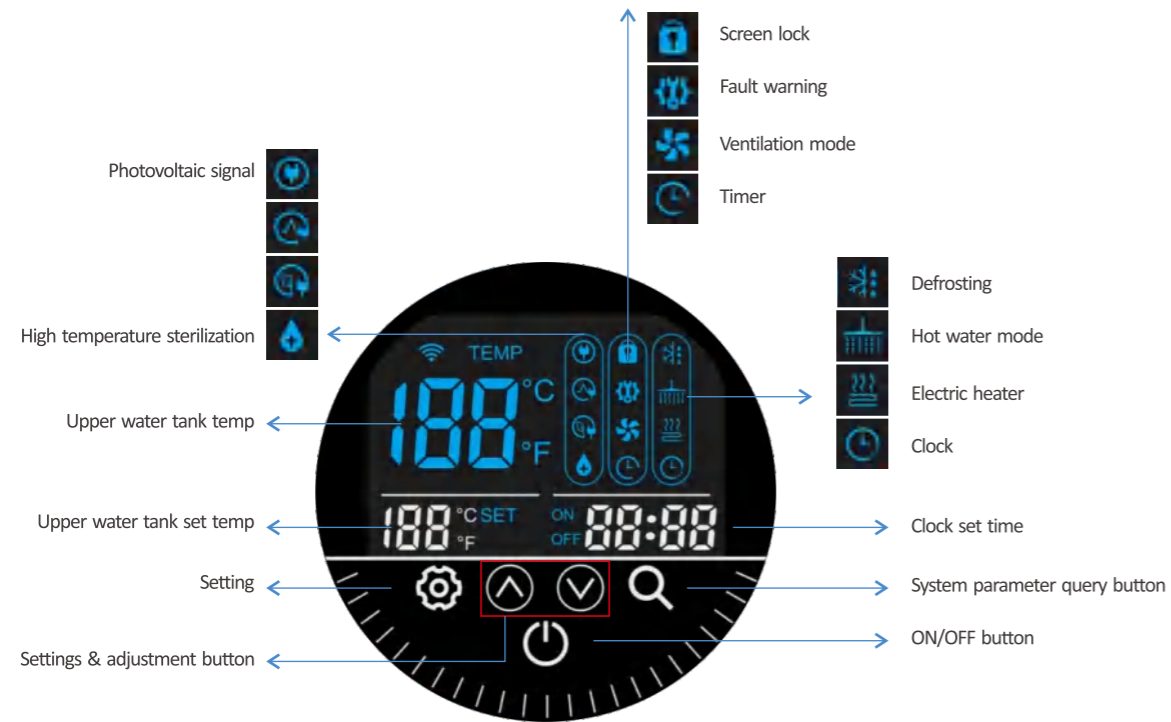


Built-in Wi-Fi module, no additional Wi-Fi box needed, control with smart App anytime anywhere.

SMART CONTROL

Smart Touch Screen Controller

Centralize all controls on the panel, touch operation, easy and simple.



4 Zero Cold Water Smart Control Technology (Optional)

Achieving the ultimate on-demand hot water experience for a zero-cold, high-quality lifestyle.

1. Automatic Mode

1) Temperature Control Mode

Set a temperature, and the system automatically activates when the temperature falls below the set point and stops once it reaches the set temperature. This provides instant hot water, ensuring a stable supply 24/7 without waiting.



2) Interval Circulation Mode

Set the cycle interval(5~60 minutes)and cycle time (1~3 minutes), automatically start the hot water preheating function, and provide stable hot water supply 24 hours a day.



2. Scheduled Mode

Why is Power World's R290 All-in-One Water Heater the Premier Choice for Residential Hot Water Needs?

1) Scheduled Temperature Control Mode

Within the "Temperature Control Mode" logic, offer 6 time periods for temperature settings, allowing customization of water temperature for each period. The circulation pump operates automatically during water usage periods, providing instant hot water and energy-saving standby mode during non-usage periods.



2) Scheduled Interval Circulation Mode

Run the "Interval Circulation Mode" within scheduled time periods to ensure a stable supply of hot water during water usage periods, while entering an energy-saving standby mode during non-usage periods.



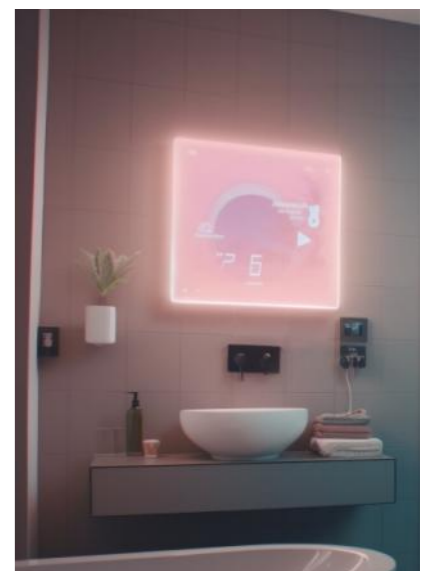
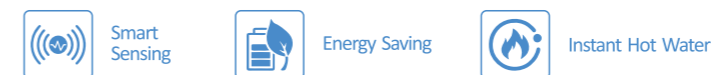
3. Water Flow Sensing Mode

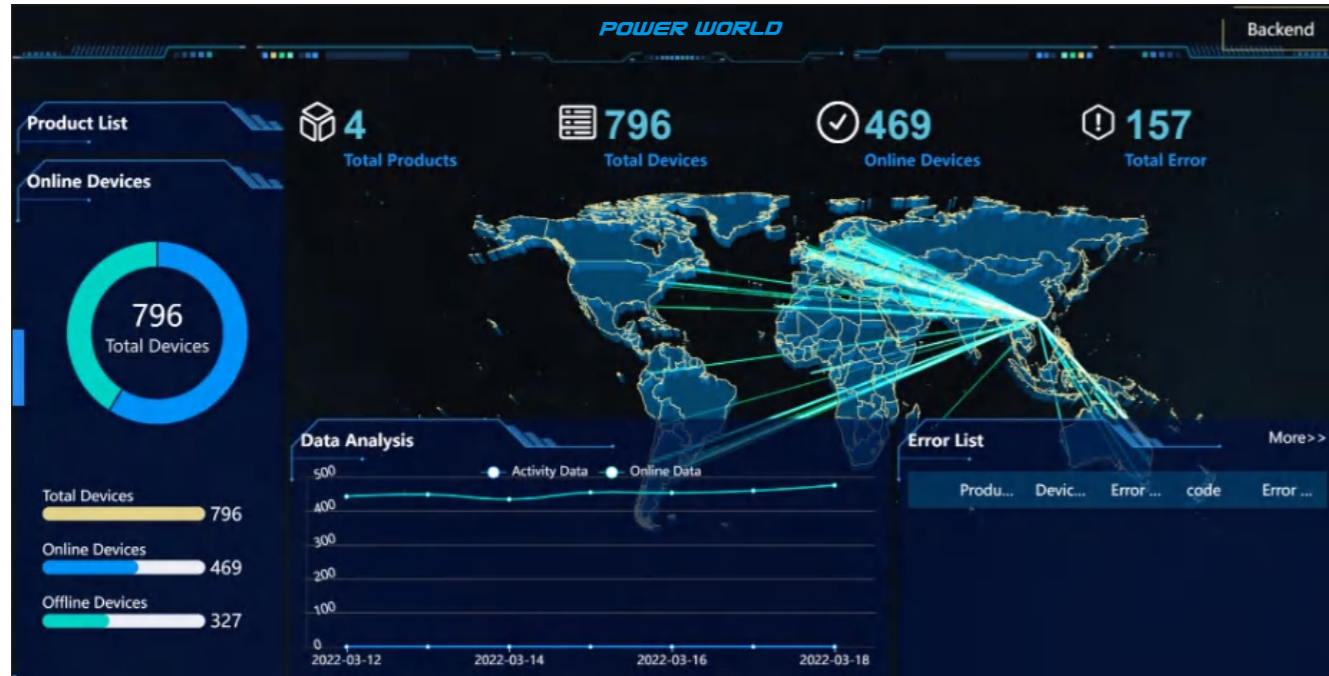
As a supplement to the "Scheduled Temp Control Mode", it adapts to irregular hot water usage scenarios. Even outside of the set time periods, briefly opening the tap activates the circulation pump to provide hot water within a short period.



4. Smart Sensing Mode

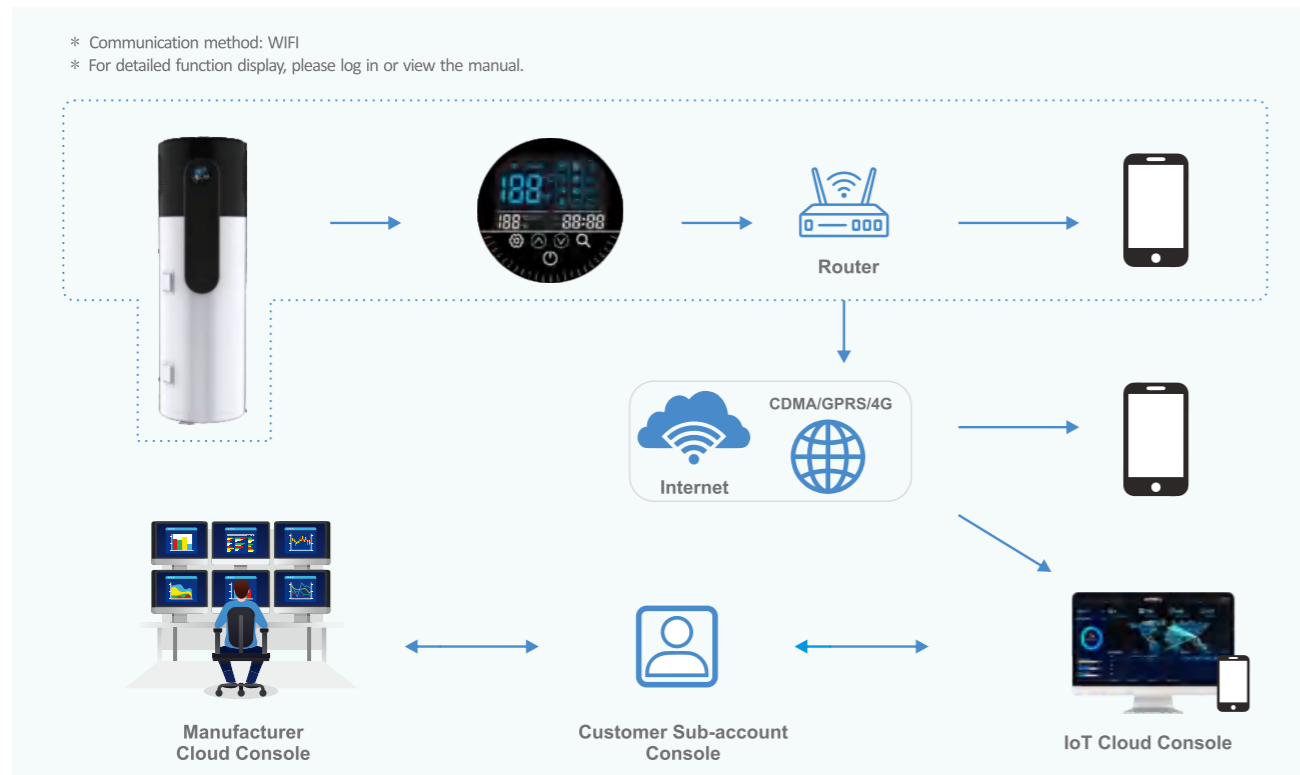
Through smart sensing technology, the system can sense the presence of users and immediately start the circulation pump to quickly deliver hot water to the required water points, achieving nearby heating and saving energy. Meanwhile, when not using hot water, the circulation system remains in standby mode, awaiting the users' arrival with minimal energy consumption.





Smart IoT Cloud Control

Real-time monitoring, data operation and maintenance, saving time and costs for users, dealers, and manufacturers.



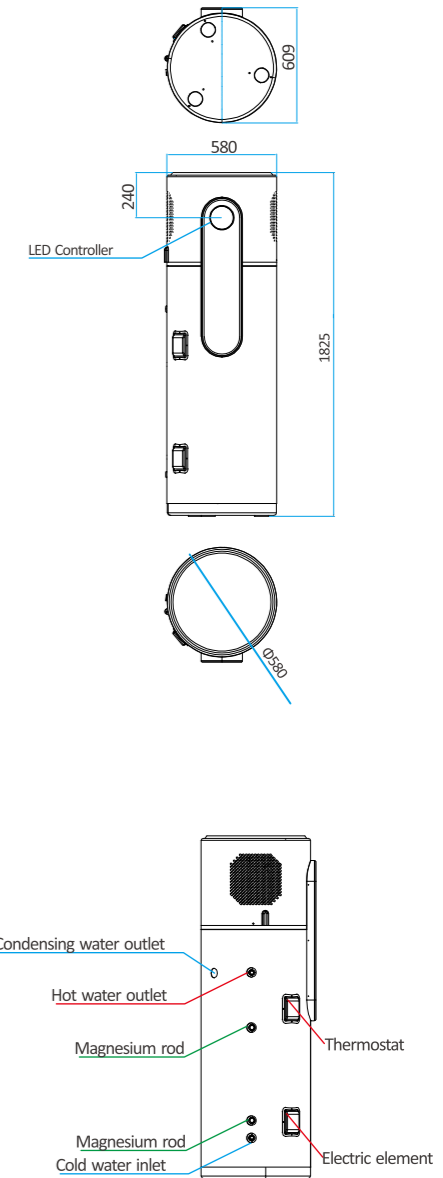
BIG DATA MANAGEMENT:
 Global device data collection, statistics, analysis and management.

EQUIPMENT MANAGEMENT
 Information statistics/operation status/parameter viewing and setting/fault diagnosis report/operation log, etc.

OTA UPGRADE
 Quickly fix code defects and remotely iteratively upgrade product mainboards.

R290 All-in-One Water Heater Full DC Inverter

Model	PW010-KZJRS(B)/200L	
Water tank volume (L)	200	
Power Supply	220-240V/1Ph/50Hz/60Hz	
Heating capacity (kW)	3.6	
Rated Power (W)	Power mode	0.8
Rated Current (A)		3.7
COP		4.50
Heating capacity (kW)	Standard mode	2.8
Rated Power (W)		0.57
Rated Current (A)		2.7
COP	Silent mode	4.92
Heating capacity (kW)		2.0
Rated Power (W)		0.44
Rated Current (A)	2.1	
COP	4.58	
Electric Heater Rated Power (W)	2000	
Max Input Power(W)	3200	
Max Input Current(A)	14.6	
Max water pressure(MPa)	0.8	
Max exchanger working pressure(MPa)	3.2	
Refrigerant	R290/300g	
Working temperature range (°C)	-7~43	
Noise(dB)	56	
Tank material	Enamel	
Water pipes connector size	DN20	
IP Grade (Level of protection)	IPX4	
Net Weight (KG)	108	
Gross Weight (KG)	120	
Net Dimension(mm)	Φ580×1825	
Package Dimension(mm)	680×680×1980	



Testing condition:Water Temperature from 15°C to 55°C, Dry bulb temperature 20°C, Wet bulb temperature 15°C.

Note:
 The parameters of some products are changed in the process of continuous optimization. Please refer to the actual products.